



ABOUT US

COMPANY HISTORY

Since IHSE foundation in 1984 we provide hardware and software solutions for industry automation and IT applications to our customers worldwide. Our special focus is on KVM extenders, switches and extensions of computer periphery where we are a global leader in edge technology products.

FACILITIES

All our products are developed and manufactured in our 1.500 sqm premises near Friedrichshafen / Germany at the Lake of Constance in the heart of Europe applying most recent tools and technology.

CONSULTING

Our specially trained and technically versatile people from the consulting service are at your disposal to find the most suitable and (cost-) efficient solution for your project or product needs.

ORDER MANAGEMENT

Our sales team will receive your orders and provide reliable information about your order status. We are proud about our standard shipment time within one week from order confirmation.

TECHNICAL SUPPORT

Customer satisfaction is our permanent dedication. You deserve not only first class products, but also reliable product management along with competent, highly available customer service! Our hotline provides immediate technical support in case of any difficulties during product setup or operation.

QUALITY ASSURANCE

All our products have been thoroughly tested before we deliver "Made in Germany" quality to you. But nobody is perfect. Please help us to improve our performance and contact our responsible director in case of any complaints!

KVM AND COMPUTERS

KVM stands for the computer console consisting of Keyboard, Video and Mouse. The transmission of monitor signals, but also of mouse signals without unacceptable delays or quality is a technical challenge which IHSE GmbH masters with proven excellence since decades.

EXTENDERS

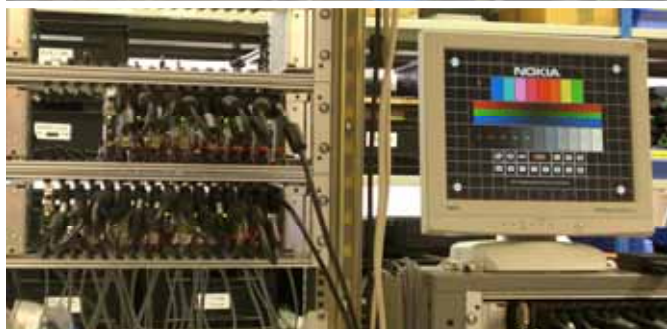
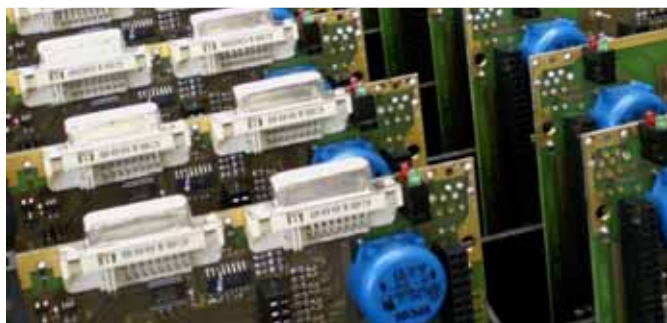
IHSE Products are your solution if you need to extend the distance between computers and their periphery: Our extenders support distances up to 10 km and more. Already since 2003 our extenders support the new digital DVI standard for graphical interfaces which guarantees high image quality for all distances.

SPLITTERS AND SWITCHES

Splitters and Switches allow control of one computer from several consoles and/or several computers from one console. In 2007 IHSE introduced as one of the first manufacturers worldwide the Draco™ minor, a Crosspoint Switch and KVM Switch for DVI signals. Draco™ CATx technology supports distances between computers and periphery of up to 280 m. Since 2008, the fibre version allows distances of 1 km (multi mode) to 20 km (single mode). Our Draco™ major is a true Matrix Switch connecting 16 Users with up to 1024 CPUs.

RGB TO DVI/VGA CONVERTER

Since our foundation, we are committed to safeguard your former investments by supporting your legacy computers and signal sources. Our RGB to DVI/VGA Converter allows you to connect modern flat screen displays (TFT) to computers or signal sources with legacy graphic standards like RGB, VGA, EGA, CGA, MDA, etc. Thus, you can continue production without expensive upgrade of the existing machine control software.



CONTACT US

IHSE GMBH
MAYBACHSTRASSE 11
D - 88094 OBERTEURINGEN
GERMANY

TEL: +49(0)7546-9248-0
FAX: +49(0)7546-9248-48
EMAIL: EMAIL@IHSE.DE

SALES
TEL: +49(0)7546-9248-41

CONSULTING
TEL: +49(0)7546-9248-42

TECHNICAL SUPPORT
TEL: +49(0)7546-9248-43

QUALITY
TEL: +49(0)7546-9248-13

WEBSITE
www.ihse.de



ihse.de